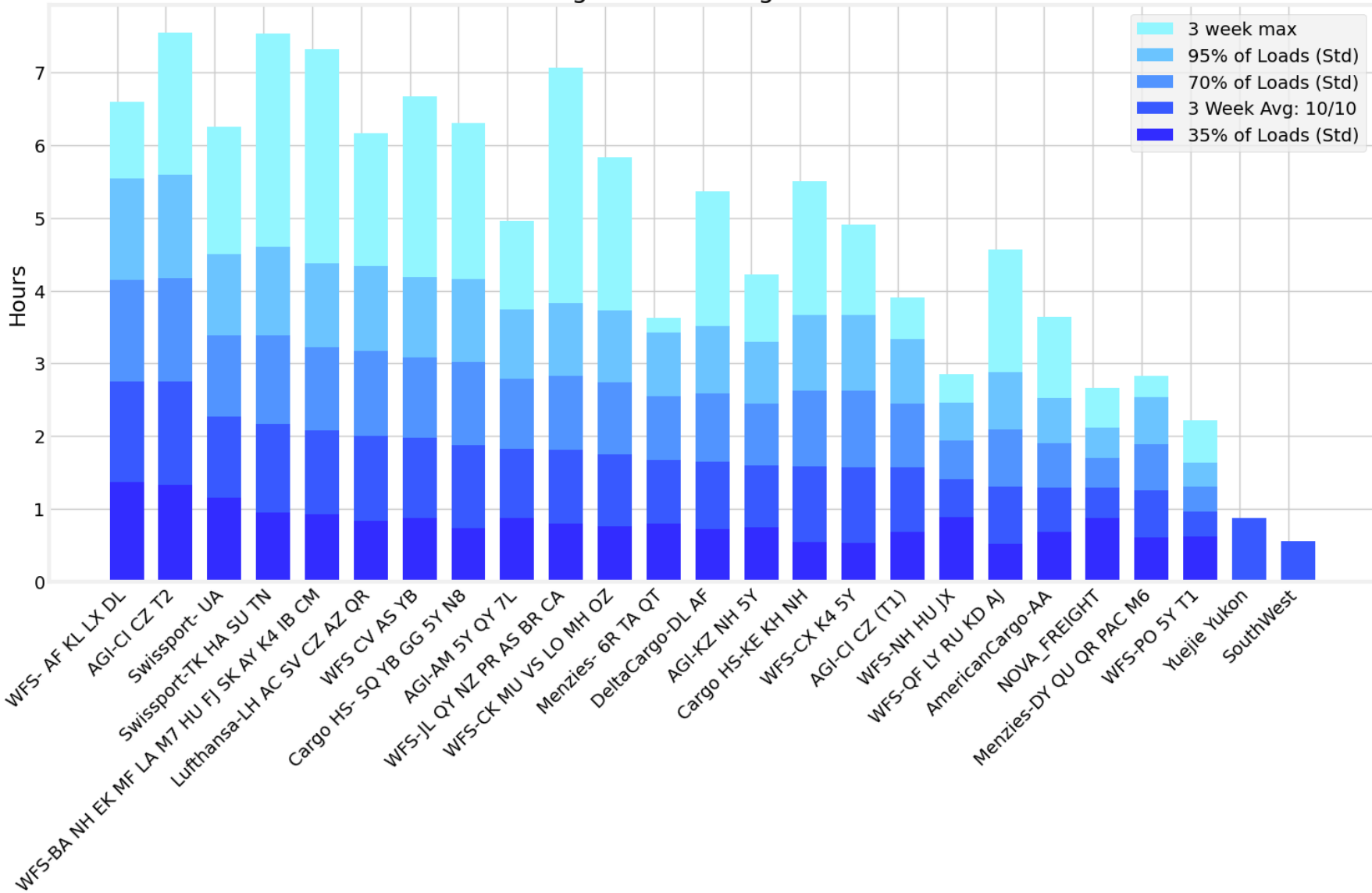


*Std // Standard Deviation // σ , is the statistical calculation used to get probability distribution.
 Our expected value or "Expected (h)" is a calculation of $+2\sigma$ from the mean value on the high and -1σ from the mean value on the low. A higher Std means the airline has a higher wait time volatility.

Average LAX Air Cargo Wait Time



Location	Mean (h)	Expected (h)	Count (n)	Std (h)
WFS- AF KL LX D	2.76	5.5 to 1.4	116	1.39

Location	Mean (h)	Expected (h)	Count (n)	Std (h)
AGI-CI CZ T2	2.75	5.6 to 1.3	80	1.43
Swissport- UA	2.27	4.5 to 1.2	267	1.12
Swissport-TK HA	2.16	4.6 to 0.9	76	1.22
WFS-BA NH EK MF	2.08	4.4 to 0.9	264	1.15
Lufthansa-LH AC	2.0	4.3 to 0.8	167	1.17
WFS CV AS YB	1.98	4.2 to 0.9	101	1.1
Cargo HS- SQ YB	1.88	4.2 to 0.7	109	1.14
AGI-AM 5Y QY 7L	1.83	3.7 to 0.9	128	0.95
WFS-JL QY NZ PR	1.81	3.8 to 0.8	310	1.01
WFS-CK MU VS LO	1.75	3.7 to 0.8	206	0.99
Menzies- 6R TA	1.67	3.4 to 0.8	37	0.88
DeltaCargo-DL A	1.65	3.5 to 0.7	131	0.93
AGI-KZ NH 5Y	1.6	3.3 to 0.7	128	0.85
Cargo HS-KE KH	1.58	3.7 to 0.5	149	1.04
WFS-CX K4 5Y	1.57	3.7 to 0.5	103	1.05
AGI-CI CZ (T1)	1.57	3.3 to 0.7	84	0.89
WFS-NH HU JX	1.41	2.5 to 0.9	43	0.53
WFS-QF LY RU KD	1.3	2.9 to 0.5	73	0.79
AmericanCargo-A	1.29	2.5 to 0.7	73	0.61
NOVA_FREIGHT	1.29	2.1 to 0.9	415	0.41
Menzies-DY QU Q	1.25	2.5 to 0.6	43	0.64
WFS-PO 5Y T1	0.96	1.6 to 0.6	54	0.34
Yuejie Yukon	0.88	nan to nan	1	nan
SouthWest	0.55	nan to nan	1	nan